

Providing prestigious scholarships for high-achieving South Australians





Investing in South Australia's future



Summing up success

\$6.3m financial support provided to SA tertiary students since 2010

\$600,000+ Playford Trust and partner support confirmed for 2024/25

670+ students supported over the past decade

75 tertiary students supported in 2024

37 partners and supporters

Priority areas

Advanced manufacturing and new technologies

Water, energy and climate change

Agriculture, aquaculture and food production

Space and defence technologies

Resources, energy and sustainability

Health sciences and enabling technologies

The Playford Trust supports high-achieving tertiary students contributing to South Australia's skills, knowledge and research base.

Together with partners and supporters across industry, government, the education sector and the community, it assists students undertaking undergraduate, Honours or PhD programs at the three main universities, or studying through TAFESA.

There is a focus on areas of strategic and economic importance to the State.

A key aim is to actively encourage outstanding students into science, technology, engineering and mathematics (STEM) careers, complementing Federal and State Government programs.

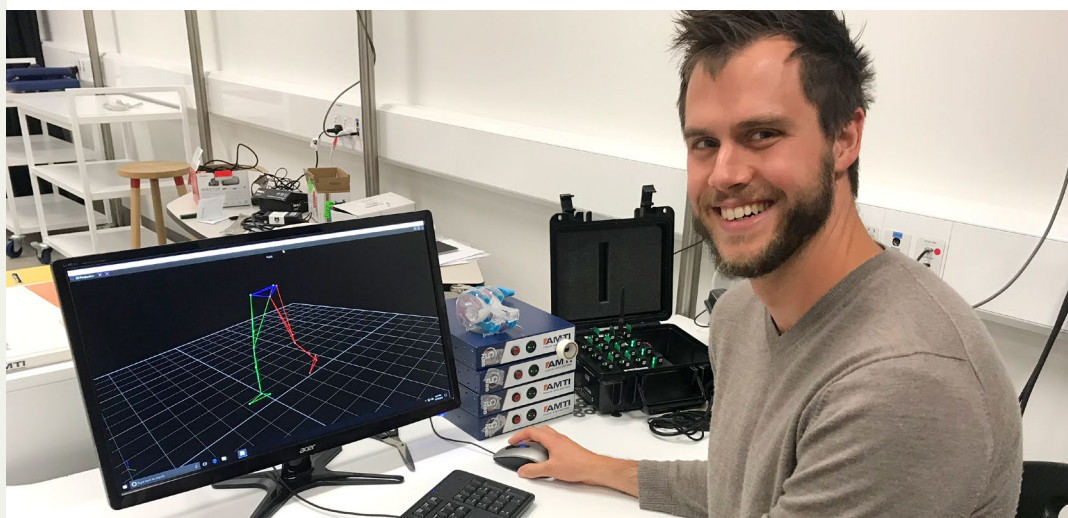
Established in 1983 in honour of Sir Thomas Playford, SA's longest-serving Premier, the Trust enjoys bipartisan political support as a not-for-profit, charitable trust operating under its own deed. It is governed by a voluntary board and administered with assistance

from the Department of the Premier and Cabinet.

The first university scholarship was awarded to a PhD student of horticulture in 1987. Awards for TAFESA students were first offered in 1999.

In recent years, the Trust's reach and impact have increased dramatically, as have the number and value of its annual disbursements. Partners often also offer work experience, internships and valuable industry networking.

The Trust's funding comes from a range of sources, including income from its own investments; contributions or sponsorships from industry, the education sector and the community; an annual State Government grant; donations from individuals and foundations; additional specific grants from government; and bequests. Donations are tax deductible.



Scholarships and awards

Full details playfordtrust.com.au/scholarships-and-awards

PhD

Playford Trust PhD Scholarships (2)

Donald Laidlaw AO PhD Scholarship

Lang Family Foundation PhD Scholarship |

4 @ \$26,250 over 3.5 years | Students undertaking a PhD in one of the Trust's priority areas

Undergraduate and Honours

The Andy Thomas Foundation/Playford Trust Scholarships | 8 @ \$5000 x 1 year |

First-year students on an undergraduate aerospace or space science and astrophysics study pathway at the University of Adelaide or University of South Australia

Aurecon/Playford Trust Scholarship |

1 @ \$10,000 x 1 year | **Final-year** student studying electrical or civil engineering and business/commerce (or similar second degree); or **fourth-year** student in electrical or civil engineering | Work placement included

AusIMM/Playford Trust Minerals Industry Scholarships | 3 @ \$9000 x 1 year |

First year to Honours students studying geoscience, mining engineering, chemical engineering (minerals processing), environmental engineering or other undergraduate programs directly relevant to the minerals industry

BHP/Playford Trust Minerals Industry

Honours Scholarship | 1 @ \$9000 x 1 year |

Honours student studying geoscience, mining engineering or chemical engineering | Work placement opportunity

Capral Aluminium/Playford Trust Scholarship

| 1 @ \$10,000 x 1 year | Student beginning

third year mechanical, mechatronic, metallurgical, chemical or electrical engineering | Paid work placement

CEEC International/ Playford Trust

Minerals Efficiency ESG Scholarship | 1 @

\$10,000 x 1 year | **First-year to fourth-year or**

Honours student studying science, geoscience, mining engineering, chemical engineering (minerals processing), or environmental engineering

Codan/Playford Trust Scholarship in

Engineering | 1 @ \$10,000 x 1 year |

Third-year, fourth-year or Honours student studying electronic engineering, signal processing or physics, and having an interest in sensing systems | Paid work placement

Coopers Brewery/Playford Trust Honours

Scholarship | 1 @ \$10,000 x 1 year |

Honours student studying at the Waite Research Institute in the field of barley breeding science or yeast fermentation | Work placement opportunity

GSA/Playford Trust Scholarships in Earth

Sciences | 2 @ \$4000 x 1 year |

Honours students studying earth sciences

Peak Iron Mines/Playford Trust Scholarships

Students studying mining engineering, geology, geoscience, or environmental sciences | 2 @ \$10,000 x 1 year **Honours or fourth-year** | Or, 1 @ \$10,000 x 1 year **Honours or fourth-year** plus 2 @ \$5000 x 1 year **First-, second- or third-year** | Work placement opportunities

Playford Trust Resources Sector Engineering Scholarships |

Up to 20 @ \$20,000 over 2 years | **Undergraduates** beginning studies in mining engineering or petroleum engineering at the University of Adelaide | Supported by Iluka Resources, BHP, Peak Iron Mines, Santos, the Government of South Australia and SACOME | Work placement opportunities

Playford Trust Honours Scholarships

| 12 @ \$7000 x 1 year | **Honours** students studying in one of the Trust's priority areas | 4 scholarships each @ 3 universities

The Hon Sir Eric Neal AC CVO / Playford Trust Engineering Scholarship |

1 @ \$10,000 x 1 year | **Fourth-year or Honours** student studying an engineering degree at Flinders University in one of the Trust's priority areas.

St Mark's College/Playford Trust

Residential STEM Scholarships | 2 @ \$8000

x 1 year | **First-year** student studying science, engineering, mathematics or technology

WSP/ Playford Trust Engineering Scholarship

| 1 @ \$10,000 x 1 year | **Honours or fourth-year** student studying civil, structural, mechanical or electrical engineering or environmental studies | Work placement included

Rural and regional

Playford Trust Rural & Regional STEM

Scholarships | 6 @ \$5000 x 1 year |

First-year undergraduates studying science, engineering, mathematics or technology | Home base in rural or regional South Australia

St Ann's College/Playford Trust Residential

Scholarships | 3 @ \$10,000 x 1 year |

Undergraduates commencing or continuing their residency at St Ann's and studying in one of the Trust's priority areas. Provided in partnership with Chartwells and the St Ann's College Foundation.

Lincoln College/Playford Trust Rural

Residential Scholarship | 1 @ \$8000 x 1 year |

First-year student studying science, engineering, mathematics or technology. Home base in rural or regional South Australia

Show Society Foundation/Playford Trust

'Excellence in Agriculture/Horticulture'

Scholarship | 1 @ \$5000 x 1 year |

Second-year or third-year student studying a science related degree in areas of importance to the agricultural industry

Vocational Education and Training

Playford Trust/TAFE SA Awards |

15 @ \$3000 x 1 year | Three industry sectors

Modern industries and new technology

– Including 2 awards specific to this sector provided by TAFESA

Agriculture, agribusiness and food production

– Including 2 awards specific to this sector provided by Sandy's Memorial Trust

Environment, conservation and horticulture

– Including 2 awards specific to this sector provided by Open Gardens South Australia, and 1 provided by Friends of the Botanic Gardens of Adelaide.

Australian Arid Lands Botanic Garden /

Playford Trust Award | 1 @ \$5000 award to

support the professional development of an **AALBG trainee** in the field of horticulture.

Trust Board

Hon Dr Diana Laidlaw AM (Chair) | Hon Trish White AM (Deputy Chair) | Mr Llew Jones (Public Officer) | Prof Don Bursill AM | Mr Nick Carne | Dr Kate Delaporte | Ms Janine Herzig | Mr Mark McGeough | Ms Bunty Parsons | Prof Carolin Plewa | Dr Leanna Read | Hon Stephen Wade

Supporting South Australia's next generation

Corporate and community support helps the Playford Trust significantly increase the reach and impact of its work.

Companies, institutions, foundations, families and individuals make a difference in three main ways. In each case, all funds go directly to the students.

Partners fund specific scholarships and/or awards, which usually carry their names and are presented jointly with the Trust. Partner-student relationships can involve work experience and networking.

Supporters provide tax-deductible funding to support scholarships and/or

awards in line with Trust priorities. Some choose to fund specific awards, areas of study or academic levels.

Donors make one-off or annual contributions to support the Trust's work. Donations over \$2 are tax deductible.

Supporters

FOX FAMILY TRUST



SANDY'S MEMORIAL TRUST



HON DIANA LAIDLAW AM

HON SIR ERIC NEAL AC, CVO

Major Donors

John and Jane Ayers
 CMV Foundation
 Julian and Stephanie Grose
 Perry Gunner
 Ann Irwin
 Joan Lyons
 Didy McLaurin
 Deborah Morgan
 Robert Pontifex AM
 Louise Rigoni
 Christina Ross
 Trish and Richard Ryan AO
 Mary Lou Simpson OAM
 Sterling Foundation
 Mary Walters
 Janet Worth

Corporate partners



Institutional partners



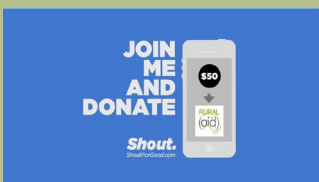
Education partners



Government partners



Playford Trust



Secure online credit card donations can be made at any time. Use the QR code at right or visit shoutforgood.com.au and search for Playford Trust. Contact us to donate by bank transfer or cheque. For full information about donations, bequests and partnering, please visit playfordtrust.com.au/funding



CONTACT US

The Playford Memorial Trust Inc. GPO Box 2343, Adelaide SA 5001
 Phone: (08) 8429 5220

Subscribe to our e-news: www.playfordtrust.com.au/subscribe

Email: admin@playfordtrust.com.au